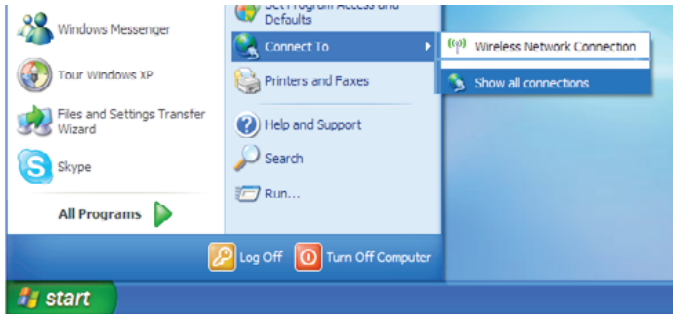
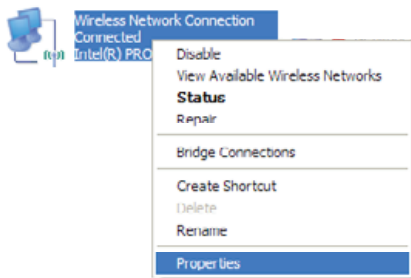


HOW TO SET UP YOUR WIRELESS PC (WINDOWS XP/VISTA) ACCESS

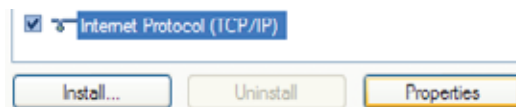
1. Open Network Connection Settings (Start > Connect To > Show all connections)



2. Open the properties of your wireless adaptor: right click and select Properties



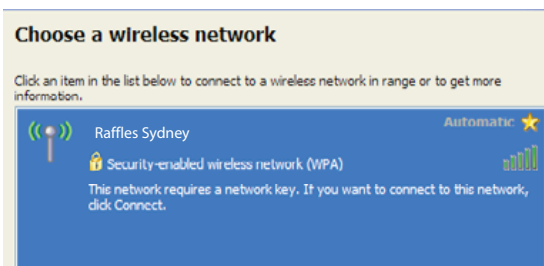
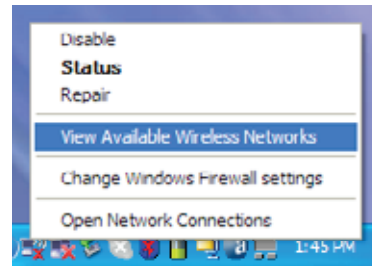
3. Select TCP/IP and press Properties



4. Ensure you are set to Obtain IP address automatically, and Obtain DNS servers automatically

5. Now right click the wireless network icon in the system tray (bottom left), and select View Available Wireless Networks

6. You will now see available networks (and Raffles Sydney should be in the list). Select Raffles Sydney and at the bottom, click "Connect"



7. You will be prompted for your network key (password). Enter the password given to you via email
8. Select Tools > Options > Advanced Connection Settings

IMPORTANT!

9. Select Manual Proxy Configuration and set HTTP Proxy to 10.10.10.200 and port 3128. TICK "Use this proxy server for all protocols"
OR set HTTPS proxy to 10.10.10.200 and port to 3128

10. Click OK > OK and test internet connection